

6

5

4

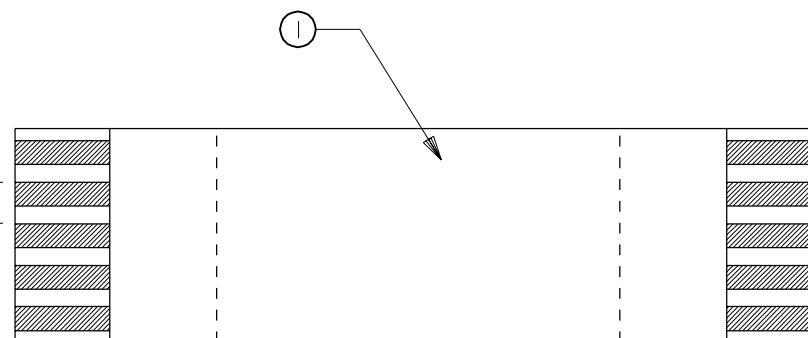
3

2

21020

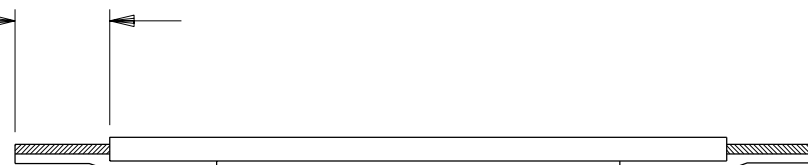
ITEM	DESCRIPTION	P/N	QTY	CKT. SIZE	TEMP. RATING
①	CABLE	21020-0547	4.016"	50	L

$\frac{.020 \pm .004}{(0.50 \pm 0.10)}$



$\frac{4.016 \pm .157}{(102.00 \pm 4.00)}$

$\frac{.157 \pm .039}{(4.00 \pm 1.00)}$ TYP



$\frac{.236}{(6.00)}$ REF TYP

NOTE:

NO PRINTING TO BE ALLOWED ON CABLE

REF. PRODUCT SPEC. NO. SMPS-21020

DIMENSIONS SHOWN (METRIC) INCH

UNLESS OTHERWISE SPECIFIED
TOLERANCES: ANGULAR $\pm 1/2^\circ$

	INCH	METRIC
3 PLACE	$\pm .005$	---
2 PLACE	$\pm .01$	± 0.13
1 PLACE	---	± 0.25

DRAFT WHERE APPLICABLE MUST
REMAIN WITHIN DIMENSIONS

DRWG. BY	DRD	CHK'D. BY	TGP
APP'D. BY	RLM	SCALE	-- : --

 $\nabla = 0$ $\blacktriangledown = 0$

REVISE ONLY ON CAD SYSTEM

TITLE

0.5 mm \varnothing FFC JUMPER
STYLE TYPE "A"
PDR UAU-000966-00-00

molex

MOLEX INCORPORATED
LISLE, ILL. 60532 U.S.A.SHEET NO.
1 OF 1DATE
02/07/10

PART NO.

21020-0547

DRWG. NO.

21020-0547

FILE NAME
21020-0547
S01THIS DRAWING CONTAINS INFORMATION THAT IS PROPRIETARY TO
MOLEX INC. AND SHOULD NOT BE USED WITHOUT WRITTEN PERMISSION.DIV.
AUSIZE
A

A

FINAL RELEASE
ECN UAU2003-0001
DEME0 02/07/10

LTR.

REVISIONS

LTR.

REVISIONS

6

5

4

3

2

1